

AINSLEE PARK

GLAZED PORCELAIN & CERAMIC WALL TILE

floridatile



FINDING YOUR ZEN

shown on front: **AIN3W 12x24** Zebrino Taupe (ceramic glossy wall)

Classic designs paired elegantly with modern formats make Florida Tile's Ainslee Park the perfect option for today's easy eclectic spaces. Marble looks feature bold graphics that allow each color to be a standout in the crowded world of interior decor. Glossy ceramic wall and matte porcelain floor tile coordinate beautifully to allow for a continuous design theme throughout any space.

Four distinct colors: **Breccia Mist** is a cool gray with strong veining of dark smoke and wispy whites. **Emperador Beige** is a warm sandy neutral with a bright elaborate vein. **Calacatta Gold** is evocative of its namesake stone featuring a thick gray vein graphic with a subtle gold undertone. **Zebrino Taupe** is the stunning zenith of this collection with linear veins of cool gray and warm taupe.

Glossy ceramic wall tile in a 12x24 format nicely complements matte porcelain floor tiles that are available in 3.75x12, 12x12 and 12x24. A diverse selection of mosaics and accessory pieces round out this flexible collection:

- 36-piece mesh-mounted mosaic in Breccia Mist, Calacatta Gold, and Emperador Beige
- 1x6 mesh-mounted, stack mosaic in Zebrino Taupe
- Mesh-mounted, hexagon mosaic featuring a mix of Breccia Mist and Calacatta Gold.
- 2x12 wall listellos in metallic tones of Brass or Steel
- Matte, porcelain 3x12 floor bullnose in all colors
- Glossy, ceramic 3x12 wall bullnose and 3x3 wall bullnose corner in all colors

Ainslee Park glazed porcelain, matte floor tile is appropriate for most residential and commercial wall, countertop, backsplash, and floor applications. Ainslee Park ceramic, glossy wall tile is appropriate for most residential and commercial wall and backsplash applications. With the exception of select trim and ceramic field tile, this line is made in the USA at our Green Squared® certified Advanced Manufacturing Center in Lawrenceburg, KY. It includes pre-consumer recycled content and is GREENGUARD® and Porcelain Tile certified.

below: **AIN10 12x24** Calacatta Gold



COLORS



AIN10
AIN1W Ceramic Glossy Wall
Calacatta Gold



AIN20
AIN2W Ceramic Glossy Wall
Emperador Beige

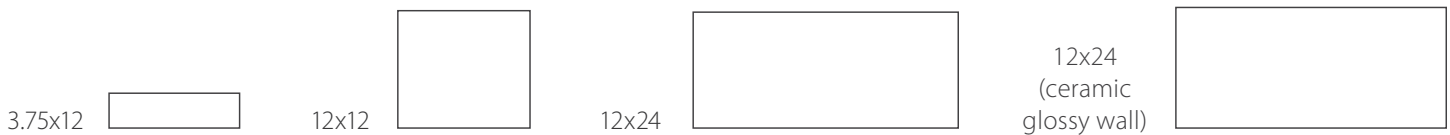


AIN30
AIN3W Ceramic Glossy Wall
Zebrino Taupe



AIN40
AIN4W Ceramic Glossy Wall
Breccia Mist

FIELD TILE FORMATS



MOSAICS & LISTELLOS



AIN20/M122
Emperador Beige 36 pc
(not available in
Zebrino Taupe)



AIN30/M1x6STK
(only available in
Zebrino Taupe)



AIN55/M4x4HEX
(Calacatta Gold &
Breccia Mist)



AIN00/L2x12 (wall only)
Brass

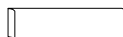


AIN01/L2x12 (wall only)
Steel

TRIMS



P43C9 3x12
Bullnose

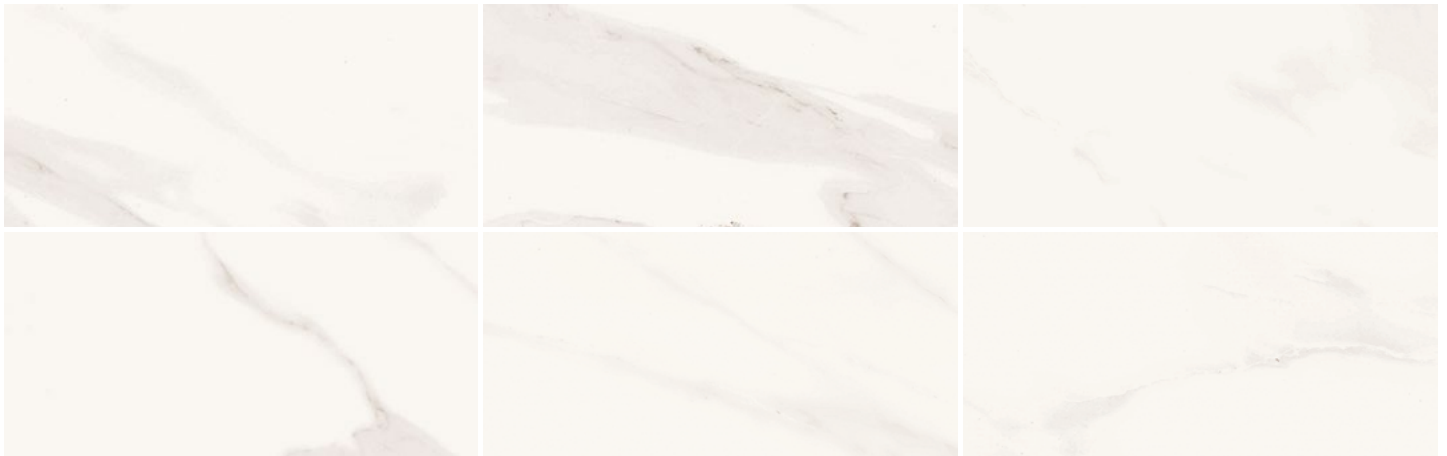


S43C9 3x12
Bullnose
(ceramic wall)



SN4339 3x3
Outside Corner
(ceramic wall)
(not available in Zebrino Taupe)

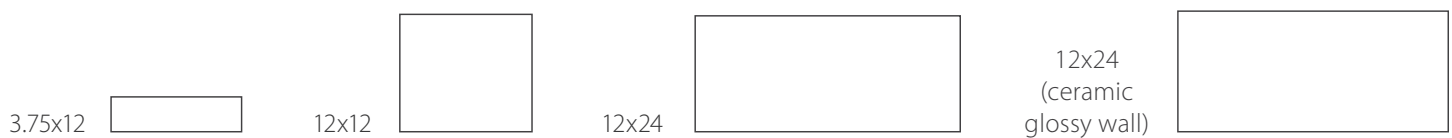
CALACATTA GOLD



AIN10

AIN1W Ceramic Glossy Wall
Calacatta Gold

FIELD TILE FORMATS



MOSAICS & LISTELLOS



AIN10/M122
Calacatta Gold 36pc



AIN55/M4x4HEX
(Calacatta Gold &
Breccia Mist)



AIN01/L2x12
Steel listello (ceramic wall)

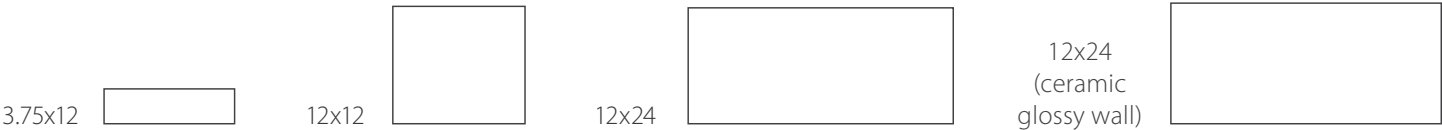


EMPERADOR BEIGE



AIN20
AIN2W Ceramic Glossy Wall
Emperador Beige

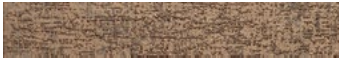
FIELD TILE FORMATS



MOSAICS & LISTELLOS



AIN20/M122
Emperador Beige 36pc



AIN00/L2x12
Brass listello (ceramic wall)



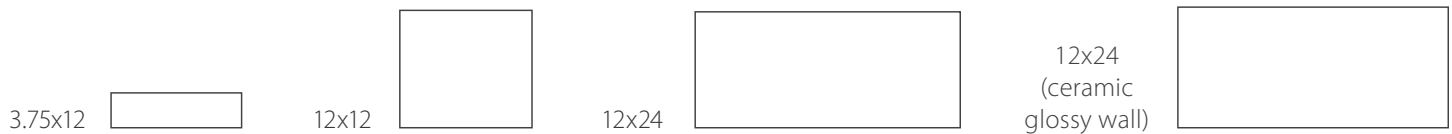
ZEBRINO TAUPE



AIN30

AIN3W Ceramic Glossy Wall
Zebrino Taupe

FIELD TILE FORMATS



MOSAICS & LISTELLOS



AIN30/M1x6STK
Zebrino Taupe Stack



AIN00/L2x12
Brass listello (ceramic wall)

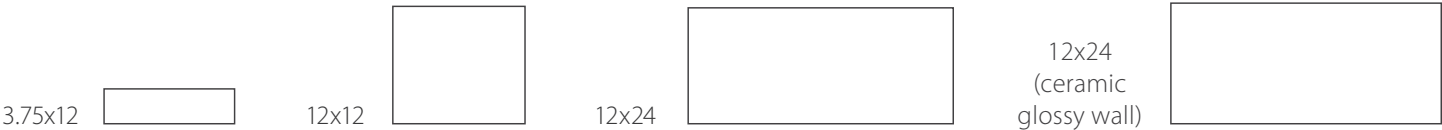


BRECCIA MIST



AIN40
AIN4W Ceramic Glossy Wall
Breccia Mist

FIELD TILE FORMATS



MOSAICS & LISTELLOS



AIN40/M122
Breccia Mist 36pc



AIN55/M4x4HEX
(Calacatta Gold & Breccia Mist)



AIN01/L2x12
Steel listello (ceramic wall)



AINSLEE PARK

GLAZED PORCELAIN & CERAMIC WALL TILE



Porcelain Technical Data Properties (Floor)	Results ¹
ANSI® A326.3 ²	Interior, Wet Plus (IW+)
Surface Hardness	7 Mohs
Break Strength	≥ 450 lbf. avg.
Water Absorption	≤ 0.5% ³
Intended Use ⁴	Residential, Light Commercial & Heavy Commercial

¹ Values are offered in good faith as being accurate and typical of normal production. Due to the natural variation of raw materials and manufacturing processes, the values of the purchased product for any particular installation may vary.

² For more information, visit floridatile.com/productuseclassifications.

³ Average production value.

⁴ Please visit www.floridatile.com/intended-use for further details.

Typical Uses

Ainslee Park glazed porcelain, matte floor tile is appropriate for most residential and commercial wall, countertop, backsplash and floor applications. Ainslee Park ceramic glossy wall tile is appropriate for most residential and commercial wall and backsplash applications.

Notice: Not all flooring products are suitable for wet areas, specialized applications, or commercial use. Please refer to the American National Standard Specifications for Ceramic Tile (ANSI® A137.1) for ceramic, stone, and glass installation for specific usage and installation information.

This Florida Tile product will contribute to USGBC LEED® points and the ANSI® approved NAHB® Green Building Points.

Field Tile Nominal Size (in) ¹	Metric (cm)	Pcs./Sq Ft ²	Thickness ³	Edge
3.75x12	9.5x30	3.26	8mm	Rectified
12x12	30x30	1	8mm	Pressed
12x24	30x60	.5	9mm	Pressed
12x24 (ceramic wall)	30x60	.5	7mm	Pressed

Notes

Color, texture, and finish variations may occur due to the nature of the product.

Color reproductions in this printed piece may vary from actual tile colors. Final selection should be made from actual tile samples.

Country of origin and other product features and characteristics are subject to change due to manufacturing efficiencies and other factors. See retailer or product packaging to verify country of origin and other product characteristics.

Mosaic	SKU	Nominal Sheet Size (in) ¹	Metric (cm)	Thickness ³
36-piece ⁴	M122	12x12	30x30	8mm
Hexagon Mix	M4x4HEX	11x11	28x28	8mm
Stack ⁵	M1x6STK	12x12	30x30	8mm

Color Variation	
	V2 Slight Variation

Trim	Shape	SKU	Nominal Size (in) ¹	Metric (cm)
Bullnose		P43C9	3x12	7.5x30
Bullnose (ceramic wall)		S43C9	3x12	7.5x30
Outside Corner ⁴ (ceramic wall)		SN4339	3x3	7.5x7.5

¹ These values may vary from lot to lot.

² These values are based on actual sizes including the grout joint.

³ May not apply to textured surfaces or tiles with uneven back patterns such as mesh mounted mosaics.

⁴ Not available in Zebrino Taupe.

⁵ Zebrino Taupe only



*porcelain only