

# 2CM PORCELAIN PAVERS



APPLICATIONS & INSTALLATIONS

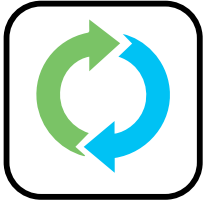
floridatile



# CONTENTS

01	Versatile, Resistant, and Functional	3
02	Intended Uses	3
03	Applications: Laying Solutions	4
	03.1 - Dry Installation on Grass	5
	03.2 - Dry Installation on Gravel/Sand	6
	03.3 - Installation on Screed with Adhesive	7
04	Special Trim	8
05	Technical Characteristics	9

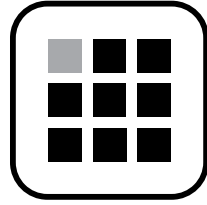
# 01 VERSATILE, RESISTANT, AND FUNCTIONAL



Can easily be removed, inspected, reused, and is eco-friendly



Colors remain stable over time



Easy to install



Easy to clean



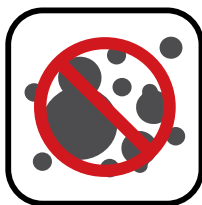
Frost resistant and fire retardant



Non-slip



Resistant to heavy loads



Resistant to mold and bacteria



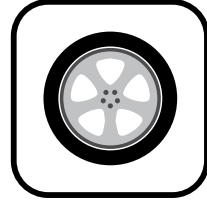
Resistant to salt



Resistant to stains, acids, and chemical agents



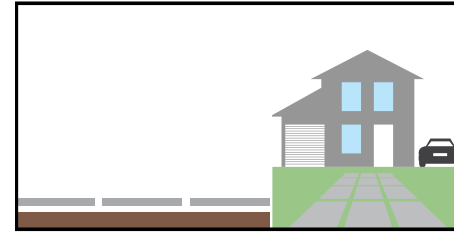
Resistant to thermal shock



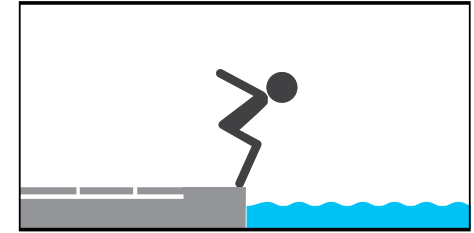
Resistant to vehicular passage (installed on screed)

# 02 INTENDED USES

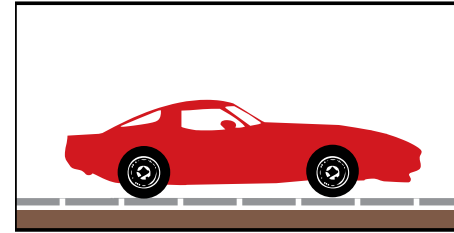
Durability and ease of installation make 2cm porcelain pavers by Florida Tile the best solution of external flooring of public and residential areas, such as those listed below:



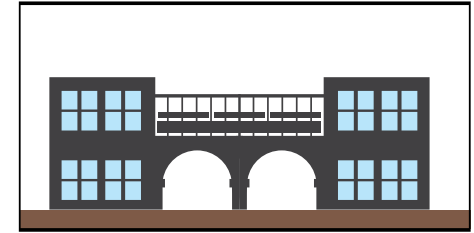
Walkways



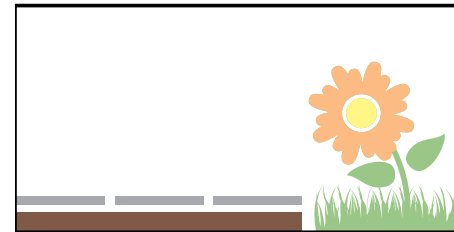
Garden paths and swimming pools



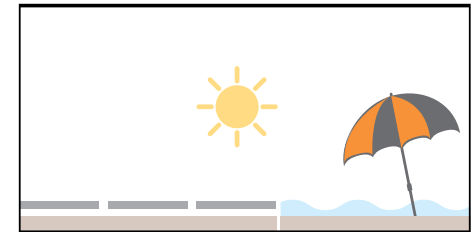
Parking lots



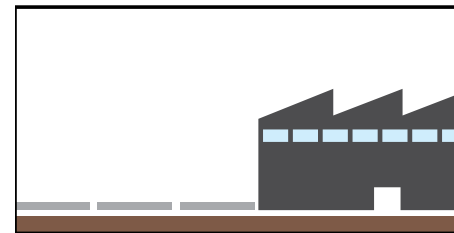
Terraces



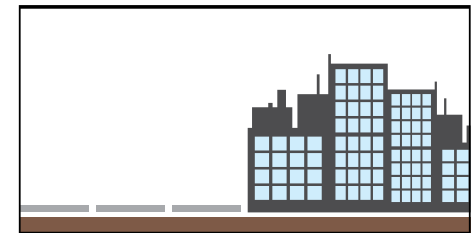
Public parks and gardens



Bathing facilities



Industrial areas



Urban areas

## 03 INSTALLATION APPLICATIONS

2cm porcelain pavers by Florida Tile are an innovative solution that are versatile due to the numerous laying possibilities it offers: dry installation on grass or gravel/sand, as well as adhesive-based installation.



### DRY INSTALLATION ON GRASS

- Easy to lay, adjust, and/or move
- Ideal solution for public parks and private gardens



For further information [read 03.1](#)



### INSTALLATION ON SCREED WITH ADHESIVE

- Driveway paving
- Matching interior and exterior areas



For further information [read 03.3](#)



### DRY INSTALLATION ON GRAVEL/SAND

- Easy to lay, adjust, and/or move
- Aesthetic features ideal for enhancing contemporary buildings



For further information [read 03.2](#)

### ELEVATED FLOOR INSTALLATION

Due to the lack of accepted industry standards for pedestal tile installations, Florida Tile is unable to warrant or certify its products for installation using pedestals. If you decide to install 2cm tile in an elevated floor installation, please ensure that all pedestal manufacturer recommendations and installation guidelines are followed, and that a qualified installer is engaged.

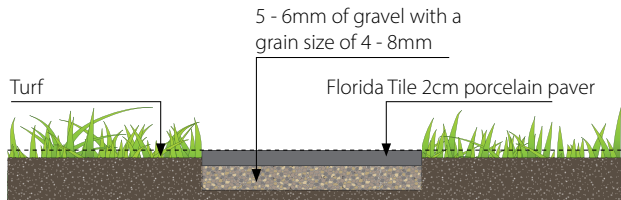
In the case of external dry installations, the force of the wind, in particular types of applications or geographical locations, can cause lifting of the slabs. It is recommended that the professional installer always check the suitability of the installation system selected according to local regulations in force.

**NOTE: Failure to follow the above recommendations may result in misuse of the product and cause injury to persons and/or damage to property.**

## 03.1 DRY INSTALLATION ON GRASS

### LAYING STEPPING STONES

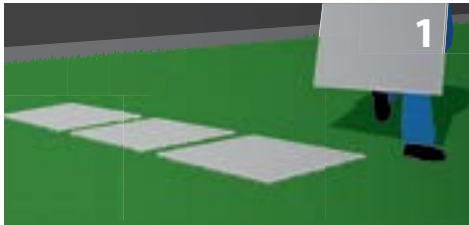
When creating a pathway with stepping stones it is important to determine the number of steps necessary, making sure that the tiles are positioned at equal distances. To obtain maximum stability, it is recommended to dig out approximately 5cm of soil, then place a fine layer of gravel. Compact the substrate, then position the tile. It is better to lay the surface of the pavers level with the turf to avoid lawn mower damage.



The application layers proposed are to be taken as an indication, with the sole purpose of explaining how to obtain a correct installation. It is recommended to always refer to specific norms and regulations in each individual country and the instructions of the design team.

### NECESSARY MATERIALS FOR LAYING ON GRASS

Shovel, fine gravel (grain size 4 - 8mm), trowel with square tip, rubber mallet, work gloves, and lifting tong.



Position the 2cm tiles on the ground to determine their correct positioning, making sure that they are placed at equal distances.



Mark the perimeter of the 2cm tile using a spade in the soil.



Remove the turf and dig out about 5cm of soil.



Form a stable and uniform substrate using fine gravel (grain size 4 - 8mm).



Lay the 2cm paver, so as to have an approximately 0.5cm level difference, between the paver and the ground.

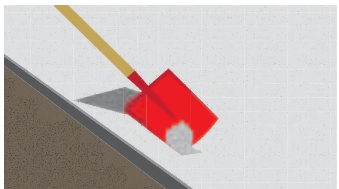


Using a rubber mallet, hammer the edge until the 2cm paver is at the same level as the grass.

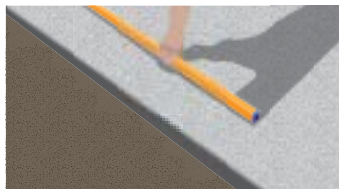


## 03.2 DRY INSTALLATION ON GRAVEL/SAND

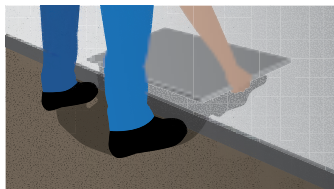
The application layers proposed are to be taken as indication, and have the sole purpose of explaining how to obtain a correct installation. It is recommended to always refer to the specific norms and regulations in each individual country and the instructions of the design team.



Form a stable and uniform substrate using fine gravel (grain size 4 - 8mm) or sand.

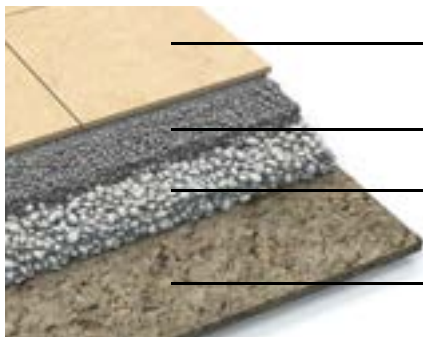


Level the substrate with a metal straightedge.



Position the paver and compact the edges to equalize the paver with the substrate. It is suggested to use a joint of 4mm to allow good water drainage.

### GRAVEL (GROUND / SOIL)



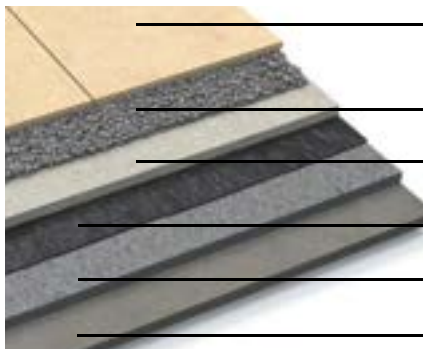
Florida Tile 2cm porcelain paver

Ballast (5 - 6cm of gravel with a fine grain size 4 - 8mm) or sand

Draining layer

Ground

### GRAVEL (FLOOR) LAYING ON FLAT HARD SURFACE



Florida Tile 2cm porcelain paver

Ballast (5 - 6cm of gravel with grain size 4 - 8mm) or sand

Separation layer of drainage membrane

Waterproof layer

Sloped screed

Floor base



## 03.3 INSTALLATION ON SCREED WITH ADHESIVE

The application layers proposed are to be taken as an indication, and have the sole purpose of explaining how to obtain a correct installation. It is recommended to always refer to the specific norms and regulations in each individual country and the instructions of the design team.



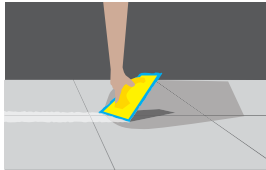
Before proceeding with the installation, clean the substrate thoroughly.



For a planar end result, it is important to apply a homogeneous layer of adhesive.



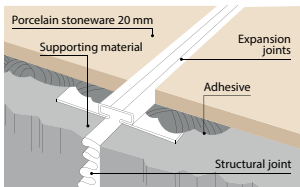
Check the planarity of the flooring during the laying operation.



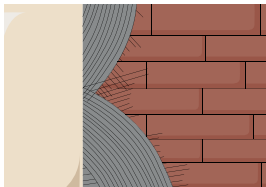
Once the installation is finished, grout the flooring. Remember to observe the times indicated by the manufacturer for light foot traffic before walking on the pavers.



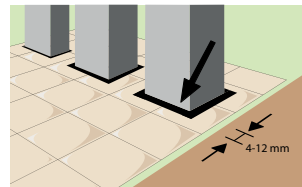
"Post-laying" cleaning helps remove residues of grout-joints, cement, and lime. It is mandatory at the end of the floor installation process.



In correspondence with a structural or dividing joint in the screed, it is mandatory to provide an expansion joint with a width that is at least the size of the existing one.

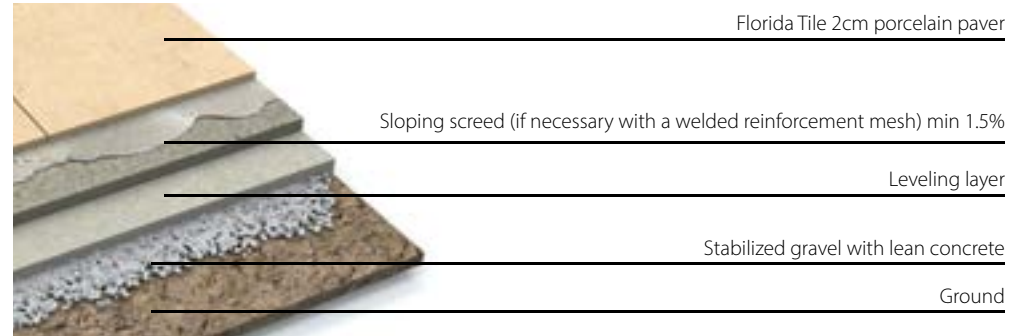


If there are joints between different surface types (e.g. between reinforced concrete and other paving), it is mandatory to provide an expansion joint.

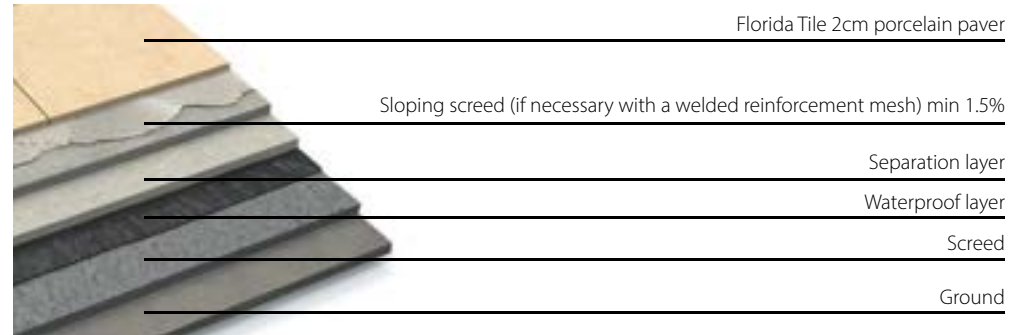


Around fixed elements of the supporting surface, such as walls, steps, columns, etc., it is mandatory to provide peripheral joints with a width of between 4 and 12mm.

### SCREED (GROUND)

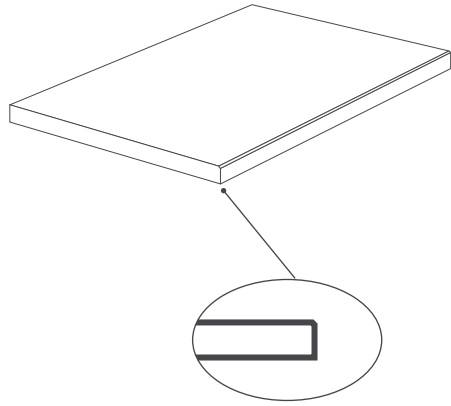


### SCREED (FLOOR BASE) LAYING ON FLAT SURFACES

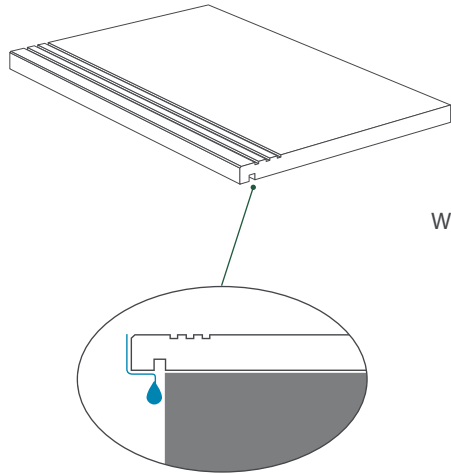


For external installation on screed with adhesive we recommend a joint of at least 5mm. The size and position of the expansion joints must be established by the installation supervisor. They must have a width of between 4 and 12mm, and divide the surface into regular areas with sizes ranging from 3x3m to 4x2.5m.

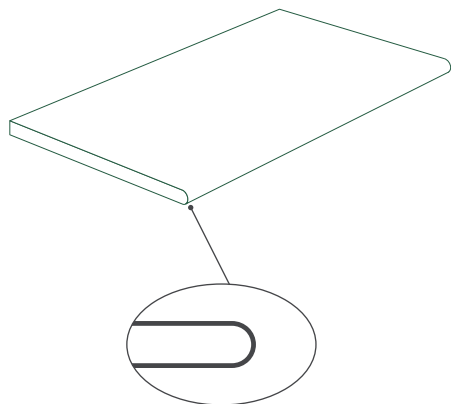
## 04 SPECIAL TRIM



STEP TREAD  
**USTEPA**  
12"x24" | 30x60 cm



STEP TREAD  
WITH GROOVES & DRIP FLAP  
**USTEPD**  
12"x24" | 30x60 cm



STEP TREAD  
WITH BULLNOSE  
**USTEPB**  
12"x24" | 30x60 cm



The application layers proposed are to be taken as an indication, and have the sole purpose of explaining how to obtain a correct installation. It is recommended to always refer to the specific norms and regulations in each individual country and the instructions of the design team.



# 05 TECHNICAL CHARACTERISTICS

Porcelain Technical Data	Results <sup>1</sup>
Properties (Floor)	
ANSI A326.3 <sup>2</sup>	Exterior, Wet (EW)
Surface Hardness	7 Mohs
Break Strength	≥ 2800 lbf. avg.
Water Absorption	≤0.5% <sup>3</sup>
Intended Use <sup>4</sup>	Residential, Light Commercial & Heavy Commercial

<sup>1</sup> Values are offered in good faith as being accurate and typical of normal production. Due to the natural variation of raw materials and manufacturing processes, the values of the purchased product for any particular installation may vary.

<sup>2</sup> For more information, visit [floridatile.com/productuseclassifications](http://floridatile.com/productuseclassifications).

<sup>3</sup> Average production value.

<sup>4</sup> Please visit [www.floridatile.com/intended-use](http://www.floridatile.com/intended-use) for further details.

Field Tile Nominal Size (in) <sup>1</sup>	Metric (cm)	Pcs./Sq Ft <sup>2</sup>	Thickness <sup>3</sup>	Edge
24x24	60x60	.25	20mm	Pressed
24x36	60x90	.17	20mm	Pressed (High Ridge) Rectified (BlueRun & Passenger)

<sup>1</sup> These values may vary from lot to lot.

<sup>2</sup> These values are based on actual sizes including the grout joint.

<sup>3</sup> May not apply to textured surfaces or tiles with uneven back patterns such as mesh mounted mosaics.

## Typical Use

2cm porcelain pavers are appropriate for most residential and commercial outdoor floor applications.

Notice: Not all flooring products are suitable for wet areas, specialized applications, or commercial use. Please refer to the American National Standard Specifications for Ceramic Tile (ANSI® A137.1) for ceramic, stone, and glass installation for specific usage and installation information.

This Florida Tile product will contribute to USGBC LEED® points and the ANSI® approved NAHB® Green Building Points.

## Notes:

Country of origin and other product features and characteristics are subject to change due to manufacturing efficiencies and other factors. See retailer or product packaging to verify country of origin and other product characteristics.

Color, texture, and finish variations may occur due to the nature of the product.

Color reproductions in this printed piece may vary from actual tile colors. Final selection should be made from actual tile samples.

