

# MINGLE HDP

High Definition Porcelain®

Glazed Porcelain Floor & Wall Tile



# MINGLE HDP<sup>®</sup>

High Definition Porcelain<sup>™</sup>

BY floridatile



**min-gle** (ming g l) V.tr. "To mix or bring together in combination, usually without loss of individual characteristics".

The classic definition of Mingle, comes in a collection from Florida Tile. Mingle<sup>HDP</sup> abandons the conventional concept of what a stone installation needs to look like. We have re-imagined and repurposed the tradition. By dissecting the classic looks of Travertine, Marble and Limestone down to their basic graphical properties, there were elements that, regardless of the pattern, could all work together. We were then able to piece them back together to create a cohesive new look that both blends in and stands out at the same time.

What we achieved is a concept that uses a combination of multiple stone graphics in the same color. Working with a strong Travertine and Breccia Marble, along with a more subdued Limestone, we intricately paired them together in the same tone to create a single color. Conceptualized as a 4 color line, we decided to make 2 colors mixing the graphics, an Ivory (Warm Winter Mix) and a Grey (Cool Summer Mix). The other two colors, a Bluish Grey (Dry Stream) created using only the Travertine graphics, and a warm Beige tone (Soft Rock) created using only the Breccia Marble graphic.

Mingle<sup>HDP</sup> delivers a 4 format offering, this glazed porcelain floor and wall tile is available in 12x12, 18x18, 12x24 all pressed and a new contemporary 6x24, cut from a pre-scored 12x24. With a smooth flat surface and square edge, this stone look is given a soft touch provided by a final top glaze "toppa" application that catches the light and adds characteristic veining to the line. Full trims are available in bullnose, chair rails and chair rail stops as well as an M12 mosaic. Decoratives offered are two 1.5x12 mosaic listellos and four 6x6 inserts that use a Bronze metallic glaze application over the stone graphic of the line. The listellos and inserts feature a mix of 60's inspired designs like Chevron and Starburst that are gaining in popularity as contemporary design again, looks to the past.

This Product is Made in the USA of 40% post-industrial recycled content, is GREENGUARD<sup>®</sup> and Porcelain Tile certified and meets the DCOF AcuTest requirements to be installed in wet areas.

Shown on Front: 28412 6x24 & 12x24 Cool Summer Mix

# VARIATION



**28412** Cool Summer Mix



**28430** Warm Winter Mix



**28434** Soft Rock



**28460** Dry Stream

COOL SUMMER MIX



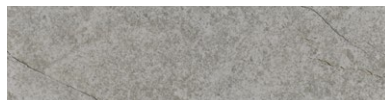
Shown: 28412 6x24, 12x24 Cool Summer Mix



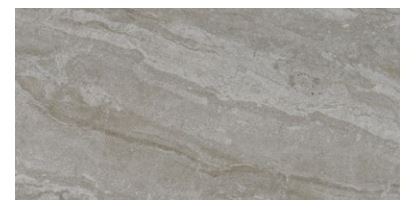
28412 12x12  
Cool Summer Mix



28412 18x18  
Cool Summer Mix



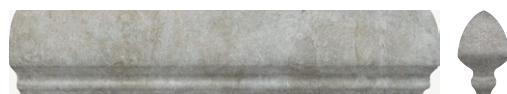
28412 6x24  
Cool Summer Mix



28412 12x24  
Cool Summer Mix



28401AL1.5x12 Cool Listello



28412/CR2x12 & 28412/CRS2x1  
Cool Summer Mix Chair Rail & Stop



28401A/I6x6 Cool Insert  
(set of two)



28401B/I6x6 Cool Insert  
(set of two)



28412/M12  
Cool Summer Mix Mosaic



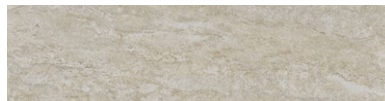
Shown: **28430 12x12, 12x24** Warm Winter Mix



**28430 12x12**  
Warm Winter Mix



**28430 18x18**  
Warm Winter Mix



**28430 6x24**  
Warm Winter Mix



**28430 12x24**  
Warm Winter Mix



**28400AL1.5x12** Warm Listello



**28430/CR2x12 & 28430/CRS2x1**  
Warm Winter Mix Chair Rail & Stop



**28400A/16x6** Warm Insert  
(set of two)



**28400B/16x6** Warm Insert  
(set of two)



**28430/M12**  
Warm Winter Mix Mosaic



SOFT ROCK

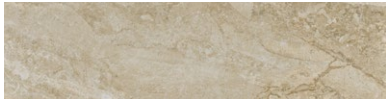
Shown: 28434 12x12, 12x24 & 6x24 Soft Rock, 28400A/L1.5x12 Warm Listello, 28400A/I6x6 Warm Insert, 28400B/I6x6 Warm Insert, 28434/CR2x12 & 28434/CRS2x1 Soft Rock Chair Rail & Stop



28434 12x12  
Soft Rock



28434 18x18  
Soft Rock



28434 6x24  
Soft Rock



28434 12x24  
Soft Rock



28400AL1.5x12 Warm Listello



28434/CR2x12 & 28434/CRS2x1  
Soft Rock Chair Rail & Stop



28400A/I6x6 Warm Insert  
(set of two)



28400B/I6x6 Warm Insert  
(set of two)



28434/M12  
Soft Rock Mosaic



DRY STREAM

Shown: 28460 6x24 Dry Stream, 28401A/16x6 Cool Insert & 28401B/16x6 Cool Insert



**28460 12x12**  
Dry Stream



**28460 18x18**  
Dry Stream



**28460 6x24**  
Dry Stream



**28460 12x24**  
Dry Stream



**28401AL1.5x12** Cool Listello



**28460/M12**  
Dry Stream Mosaic



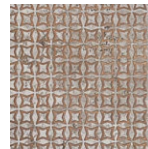
**28460/CR2x12 & 28460/CRS2x1**  
Dry Stream Chair Rail & Stop



**28401A/16x6** Cool Insert  
(set of two)



**28401B/16x6** Cool Insert  
(set of two)





Shown: 28434 12x12 & 12x24 Soft Rock, 28400A/16x6 Warm Insert, 28400B/16x6 Warm Insert

# MINGLE HDP

High Definition Porcelain\*

BY floridatle

## Typical Uses

Mingle<sup>HDP</sup> glazed porcelain floor and wall tile is appropriate for all residential and commercial wall, countertop and backsplash applications, all residential and most commercial floor applications.

Made in USA: With the exception of select trim and decorative pieces, this product line is Made in the USA of 40% pre-consumer recycled content, is GREENGUARD® and Porcelain Tile certified and meets the DCOF AcuTest to be installed in wet areas.

Notice: Not all flooring products are suitable for wet areas, specialized applications or commercial use. Please refer to the American National Standard Specifications for Ceramic tile (ANSI A137.1) for ceramic, stone and glass installation for specific usage and installation information.

This Florida Tile product will contribute to USGBC LEED points and the ANSI approved NAHB Green Building Points.

Properties (Typical)	ASTM	ANSI	Results <sup>1</sup>
DCOF AcuTest <sup>2</sup>	A137.1	≥0.42	Pass
Visible Abrasion Resistance	C-1027	As Reported <sup>3</sup>	Class V
Glaze Hardness	Mohs Scale	N/A	7 Mohs
Break Strength	C-648	250 lbf.	525 lbf. avg.
Water Absorption	C-373	≤0.5%	≤0.5%

<sup>1</sup> These tests are performed by a 3rd party testing lab using industry standard equipment and techniques. Values are offered in good faith as being accurate and typical of normal production. Due to the natural variation of raw materials and manufacturing processes, the values of the purchased product for any particular installation may vary.

<sup>2</sup> ANSI A137.1 standard, ceramic tiles selected for level interior spaces expected to be walked upon when wet must have a minimum wet DCOF AcuTest value of 0.42.


<sup>3</sup> Class 0 Not recommended for floors, Class I Light Residential, Class II Residential, Class III Heavy Residential or Light Commercial, Class IV Commercial, Class V Heavy Commercial.

Field Tile Nominal Size <sup>1</sup>	Metric (cm)	Pieces /Sq. Ft <sup>2</sup>	Thickness <sup>3</sup>
6" x 24"	15 x 60	1	10 mm
12" x 12"	30 x 30	1	9.5 mm
18" x 18"	45 x 45	.44	9.5 mm
12" x 24"	30 x 60	.5	10 mm

<sup>1</sup> These values may vary from lot to lot.

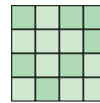
<sup>2</sup> These values are based on actual sizes including the grout joint.

<sup>3</sup> May not apply to textured surfaces or tiles with uneven back patterns.

Trim	Shape	SKU	Nominal Size	Metric (cm)
Bullnose		PC43C9	3"x 12"	7.5 x 30

## Color Variations

Color reproductions in this printed piece may vary from actual tile colors. Final selection should be made from actual tile samples.



### V2 = Slight Variation

Distinguishable difference in texture and/or pattern with similar color.



floridatle