

THINNER

SLIM • LIGHTWEIGHT • PORCELAIN

restore **HDP**
High Definition Porcelain



THINNER

SLIM • LIGHTWEIGHT • PORCELAIN



Restore^{HDP} Story

Restore^{HDP} is the first product line from Florida Tile in a revolutionary new porcelain tile concept. These thin porcelain wood plank tiles are made with the newest manufacturing techniques in the world. Using the finest raw materials in combination with an incredible pressing process, we are able to create a true porcelain tile that is only 5.5mm thick. Thin and incredibly durable, this new product category opens up an enormous possibility of installation options, only some of which we have explored. These 5.5mm porcelain tiles have been Robinson tested at the Tile Council of America labs, receiving an “extra heavy” duty service rating. They are ideal for commercial floor, wall and exterior applications as well as all residential floor, wall, countertop, stairs, and the list goes on.

Aesthetically, Restore^{HDP} utilizes the most technically advanced glazing system in the industry today, digital printing. Like the technology that changed the television industry, HDP—High Definition Porcelain® brings you the most realistic image possible, except it is on a tile. Restore takes on the look of antique barn planks, one of the most rustic and dramatic reclaimed looking porcelain tile floors available. This rustic wide plank porcelain tile flooring is duplicated from 150-200 year old rustic barn woods. The Restore^{HDP} planks are worn with character from farmers of generations ago. This incredible realistic looking tile has the worn wood flooring feel with dents and dings and evidence of hard work from days gone by. Yet, the ease of maintenance that only innovative high quality porcelain tile can provide.



Why Restore^{HDP} instead of real wood, for your project?

- Maintenance free
- Waterproof
- Easier to clean
- Stain resistant
- UV fade resistant
- Dent and scratch resistant
- No sealers, stains and additional chemicals



34003 8x39 Cotton Mill



34093 8x39 & 8x59 Antiqued Fence



THE ADVANTAGES OF BEING UNIQUE:

Application Benefits

- Ease of installation; thin and lightweight, easy to cut and drill
- Ideal for installations over properly prepared existing tile, avoiding the demolition and waste disposal
- Thin profile reduces the need to cut doors and less ramping to other finish materials
- Innovative applications can be curved surfaces, interior design applications, furniture and accents
- This unique production process of Florida Tile's THINNER, allows us to produce perfectly flat tile panels
- Rectified edges; all edges have been mechanically finished for a more exact dimension

Technical Benefits

- Florida Tile's THINNER is fully vitreous porcelain making it non-absorbent, easy to clean, freeze thaw stable, resistant to acids, stains and pollution
- Thin porcelain plus boasts excellent values for resistance to bending and breaking strength
- Proven; thin large format tile has been used successfully around the world for residential and commercial applications for over 10 years
- Increased flexibility allows for installations on some curved structures

Environmental Benefits

- Strong decrease in raw materials, water and energy consumption, as well as pollution
- Reduced CO² exhausts during firing, up to 20x less than standard tile and 50% less natural gas used compared to traditional tile production
- Transportation uses less fuel because you can fit more tile in a smaller space
- Incredibly light for size weight ratio for 3.5mm = 1.6 lbs. per SQFT, for 5.5mm = 2.3 lbs. per SQFT, compared to a typical 10mm – 11mm porcelain tile, weighing 5 – 6 lbs. per SQFT



34003 8x39 Cotton Mill

Cotton Mill

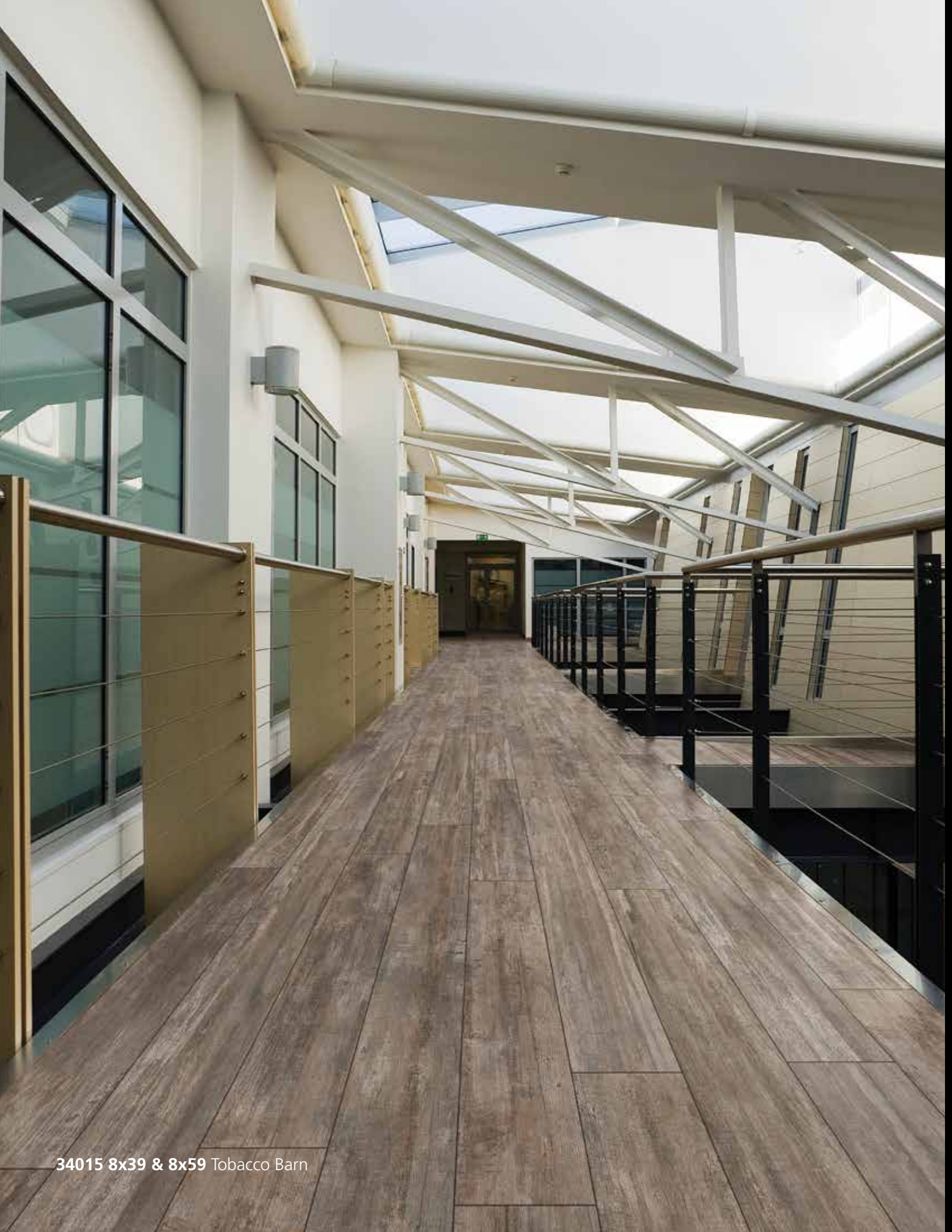


34003 8x39
Cotton Mill



34003 8x59 Cotton Mill

34003 8x59
Cotton Mill



34015 8x39 & 8x59 Tobacco Barn

Tobacco Barn



34015 8x39 Tobacco Barn



34015 8x39
Tobacco Barn

34015 8x59
Tobacco Barn



34018 8x59 Weathered Dock

Weathered Dock

34018 8x39 Weathered Dock

34018 8x39
Weathered
Dock

34018 8x59
Weathered
Dock





34093 8x39 & 8x59 Antiqued Fence

Antiqued Fence



34093 8x39
Antiqued Fence

34093 8x59
Antiqued Fence

34093 8x39 Antiqued Fence



Colors



34003 Cotton Mill



34015 Tobacco Barn



34018 Weathered Dock



34093 Antiqued Fence

Color Variations: Color reproductions in this printed piece may vary from actual tile colors. Final selection should be made from actual tile samples.

Sizes



8" x 39"



8" x 59"

Item #	Color Name	Nominal Size (inches)	Metric (cm)
34003 8x39	Cotton Mill	8 x 39	20 x 100
34015 8x39	Tobacco Barn	8 x 39	20 x 100
34018 8x39	Weathered Dock	8 x 39	20 x 100
34293 8x39	Antiqued Fence	8 x 39	20 x 100
34003 8x59	Cotton Mill	8 x 59	20 x 150
34015 8x59	Tobacco Barn	8 x 59	20 x 150
34018 8x59	Weathered Dock	8 x 59	20 x 150
34093 8x59	Antiqued Fence	8 x 59	20 x 150

Properties	Results ¹
Exterior Rated ²	Yes
DCOF AcuTest ³	Pass
Thickness	5.5mm
Glaze Hardness	7 mohs
Breaking Strength ⁴	>=250 lbf
Water Absorption ⁵	<=0.1%
Durability Classification ⁶	V Heavy Commercial
Deep Abrasion	P1
Shade Variation	V3

¹These values vary lot to lot.

²When used as recommended in the THINNER Technical Manual. For more information go to www.floridatile.com/thinner.

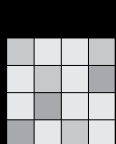
³ANSI 137.1 Standard, ceramic tiles selected for level interior spaces expected to be walked upon when wet must have a minimum wet DCOF AcuTest value of 0.42.

⁴Average value referred to all-in-one piece (tile and fiberglass mesh).

⁵Average value referred to ceramic material only.

⁶Class I Light Traffic Areas, Class II Medium Light Traffic Areas, Class III Medium Traffic Areas, Class IV Heavy Traffic Areas, Class IV + Heavy Traffic Areas (high resistance to scratches and stains).

Shade Variation



V3

Moderate Variation

While the colors present on a single piece of tile will be indicative of the colors to be expected on the other tiles, the amount of colors on each piece may vary significantly. For example "that little bit of color" on one piece of tile may be the primary color on the next piece.

Applications

Restore 5plus is suitable for interior and exterior, wall and floor applications in residential and commercial construction. More detailed areas of use charts are available in the THINNER Technical Manual.

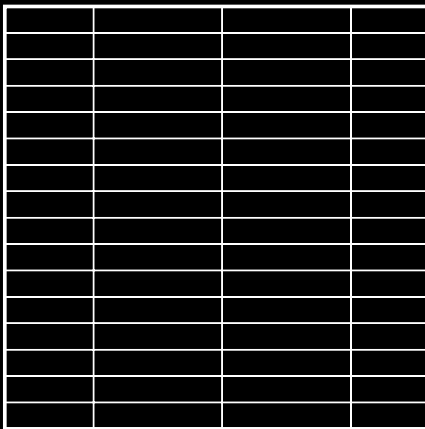
This Florida Tile product will contribute to USGBC registered LEED projects. It will also contribute to the ANSI approved NAHB Green Building Standard ICC 70.



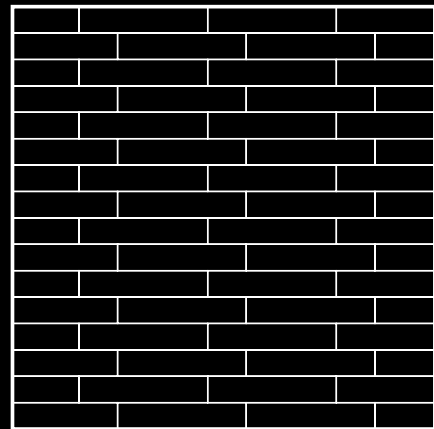


Patterns

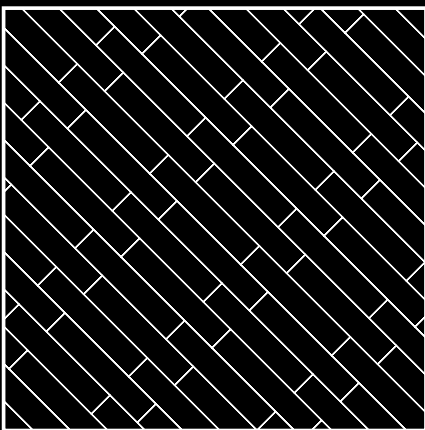
These are common patterns for Restore^{HDP}. Many additional patterns can be created by a skilled installer. When incorporating the two different sizes of Restore^{HDP} planking into an installation, it increases the depth of available patterns even more. Florida Tile Restore^{HDP} planking may be installed with either a 33% or 50% offset.



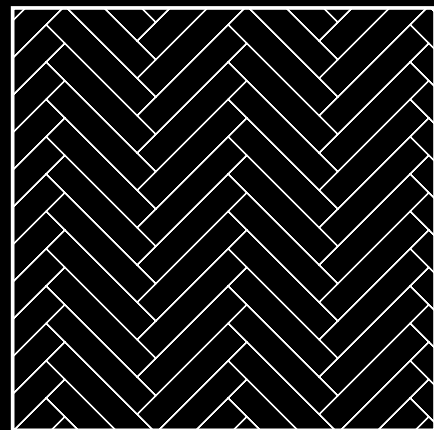
Soldier Stack



Running Bond



Diagonal Running Bond



Herringbone

It is important that previous to installation of any Thinner product, you must consult and review the entire THINNER Technical Manual. The below set of installation guidelines are not complete and are only provided for a brief review of the steps necessary to install the THINNER products. Additional information on tools, cutting, drilling, handling, mortar selection, installation, etc. is available in the THINNER Technical Manual, available at www.floridatile.com/thinner or your THINNER Distributor.

Handling

For installation, most of the smaller sizes can be handled with a minimum of two quality suction cups or by hand. The 1m x 3m (39" x 118") tiles of THINNER can be lifted from the container by one person. Lift the slab with open hands. Slowly raise the longer side so as to eliminate the suction effect, due to contact with the underlying slab, and ensure a good grip. When the slab is upright, carry holding it from its top edge, keeping it straight and upright. Carrying should be performed with a second person. The THINNER tile panels of 1m x 3m size, are best handled by two persons, using a special frame with mounted suction cups. Fasten the frame to the finished side of the tile panel. Now raise the frame and slab to eliminate the suction effect.



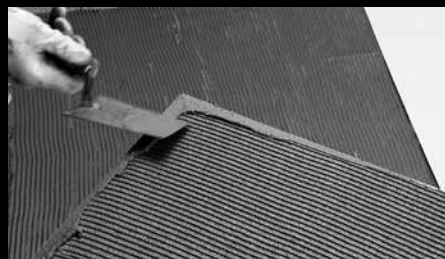
Installation

Substrate preparation: substrate preparation should be completed following ANSI A108 AN-2 "General Requirements for Sub-surfaces". All substrates should be plumb and true, surface deviation should not exceed 1/8" in 10'.

Setting materials: define the characteristics of the substrate on which the thin tile panels will be installed. Choose a mortar and grout that is suitable for the substrate and intended use of the project. In most installations a premium quality ANSI 118.4 mortar will be used. Consult the THINNER Technical Manual and check with the setting material supplier.

Installation: previous to handling, cutting, or installing the THINNER products, it is important to have on your safety equipment (Typical PPE; Sure grip gloves, Safety glasses, Dust mask). Movement (Expansion) joints should be provided to comply with TCA method EJ 171. Installation must comply with the current version of ANSI A108.02, A108.1B and ANSI A 108.5.

Mix the mortar to the highest mix consistency according to the mortar manufacturer's current data sheet. Apply mortar to the substrate with the flat side of the trowel, with enough pressure to firmly work into the surface. With a proper notched trowel, immediately follow with a heavier coat of material using the appropriate trowel and enough mortar to provide 100% coverage to the back of the tile and substrate. Notches should run parallel to each other and perpendicular to the long side of the tile. Use caution that the mortar does not skim over. It is advised that during the installation, remove a tile to insure the mortar has not skinned over and check the tile and substrate mortar coverage. Place tiles in mortar, slide back and forth perpendicular to the ridges. Coverage of mortar is essential to a successful installation of the THINNER tile. Special attention to ensure 100% coverage of edges and corners is necessary. After laying the tile, make sure it is firmly adhering to the underlying surface. For walls, you can use a rubber coated trowels or a hard grout float. For floors, tile tapping tools with plastic plates or orbital sanders should be used to increase the coverage of the mortar. Keep the tile and grout joints clean. Consult with the mortar manufacturer for set times of the tile and thinset mortar before grouting.





34015 8x39 & 8x59 Tobacco Barn

THINNER

SLIM ▪ LIGHTWEIGHT ▪ PORCELAIN

