

# LEVEL 10

**HDP**  
High Definition Porcelain®

Color Body Porcelain Floor & Wall Tile





# LEVEL 10 HDP

BY floridatile



Shown: **33318 18x18** Salon Bronze, **33301A/I9x9** Ornament Warm Inserts

Level 10<sup>HDP</sup> by Florida Tile is the new benchmark HDP–High Definition Porcelain® line inspired by the cool modern aesthetics of a stained concrete. Not content as a simple one-dimensional look, we have taken the concrete styling and combined it with other natural elements. Incorporating signs of distress, we are able to add character that brings the collection to life.

Worn in staining, watermarks and chips, the concrete look graphics become more familiar and engaging. Lending a hand in the design are organic elements commonly found in natural stone; fill marks, sediment, pits and veining. The color palette is made up of 3 warm tones, a White, Beige and Bronze with a fourth color that lends itself a cool Blue undertone in a Light Grey.

The Level 10<sup>HDP</sup> collection comes in three large formats 12x24, 18x18 and 18x36 (rectified) and features creative patterned decorative inserts and listellos in coordinating warm and cool versions, as well as M12 mosaics, bullnose and a full cove base package in each of the 4 colors.

This product line, with the exception of select trim and decorative pieces, is Made in the USA of 40% pre-consumer recycled content, is GREENGUARD® and Porcelain Tile Certified. (18x36 rectified made in Italy).

Shown on Front: **33315 18x36** Platinum Suite, **33301B/I9x9** Ornament Cool Inserts



PEARL ATRIUM

Shown: 33310 12x24 Pearl Atrium, 33301A/L3x12 Ornament Warm Listello



33310 12x24  
Pearl Atrium



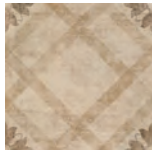
33310 18x18  
Pearl Atrium



33310 18x36  
Pearl Atrium (rectified)



33300A/I9x9  
Ornament Warm Inserts (set of 4 designs)



33301A/L3x12  
Ornament Warm Listello



33310/M12  
Pearl Atrium Mosaic





Shown: **33341 18x18** Mezzanine Gold, **33300A/I9x9** Ornament Warm Inserts



**33341 12x24**  
Mezzanine Gold



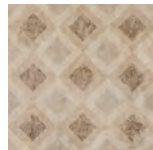
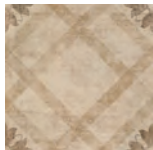
**33341 18x18**  
Mezzanine Gold



**33341 18x36**  
Mezzanine Gold (rectified)



**33300A/I9x9**  
Ornament Warm Inserts (set of 4 designs)



**33301A/L3x12**  
Ornament Warm Listello



**33341/M12**  
Mezzanine Gold Mosaic





Shown: **33318 18x18** Salon Bronze, **33301A/19x9** Ornament Warm Inserts



**33318 12x24**  
Salon Bronze



**33318 18x18**  
Salon Bronze



**33318 18x36**  
Salon Bronze (rectified)



**33300A/19x9**  
Ornament Warm Inserts (set of 4 designs)



**33301A/L3x12**  
Ornament Warm Listello

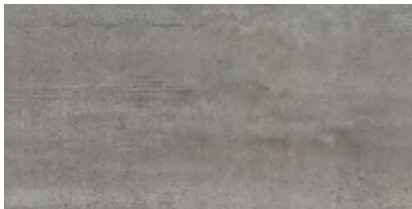


**33318/M12**  
Salon Bronze Mosaic





Shown: **33315 18x36** Platinum Suite, **33301B/I9x9** Ornament Cool Inserts



**33315 12x24**  
Platinum Suite



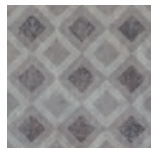
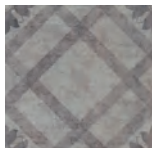
**33315 18x18**  
Platinum Suite



**33315 18x36**  
Platinum Suite (rectified)



**33300B/I9x9**  
Ornament Cool Inserts (set of 4 designs)



**33301B/L3x12**  
Ornament Cool Listello



**33315/M12**  
Platinum Suite Mosaic



# VARIATION



**33310** Pearl Atrium



**33341** Mezzanine Gold



**33318** Salon Bronze



**33315** Platinum Suite





Shown: **33310 12x24** Pearl Atrium, **33301A/L3x12** Ornament Warm Listello

# LEVEL 10 HDP

High Definition Porcelain

BY **floridatile**

## Typical Uses

Level 10<sup>HDP</sup> color body porcelain floor tile is appropriate for all residential and commercial wall, countertop and backsplash applications, all residential and most commercial floor applications.

Notice: Not all flooring products are suitable for wet areas, specialized applications or commercial use. Please refer to the American National Standard Specifications for Ceramic Tile (ANSI A137.1) for ceramic, stone and glass installation for specific usage and installation information.

Made in USA: With the exception of select trim and decorative pieces, this product line is Made in the USA of 40% pre-consumer recycled, is GREENGUARD® and Porcelain Tile Certified, and meets the new DCOF AcuTest requirements to be installed in wet areas. (18x36 rectified is made in Italy).

This Florida Tile product will contribute to USGBC LEED points and the ANSI approved NAHB Green Building Points.

Properties (Floor)	ASTM	ANSI	Results <sup>1</sup>
DCOF AcuTest <sup>2</sup>	A137.1	≥0.42	Pass
Visible Abrasion Resistance	C-1027	As reported <sup>3</sup>	Class IV
Glaze Hardness	Mohs Scale	N/A	7 Mohs
Break Strength	C-648	250 lbs.	Pass
Water Absorption	C-373	≤0.5%	≤0.5%

<sup>1</sup> These tests are performed by a 3rd party testing lab using industry standard equipment and techniques. Values are offered in good faith as being accurate and typical of normal production. Due to the natural variation of raw materials and manufacturing processes, the values of the purchased product for any particular installation may vary.

<sup>2</sup> ANSI A137.1 standard, ceramic tiles selected for level interior spaces expected to be walked upon when wet must have a minimum wet DCOF AcuTest value of 0.42.




<sup>3</sup> Class 0 Not recommended for floors, Class I Light Residential, Class II Residential, Class III Heavy Residential or Light Commercial, Class IV Commercial, Class V Heavy Commercial.

Field Tile Nominal Size <sup>1</sup>	Metric (cm)	Pcs./Sq Ft <sup>2</sup>	Thickness <sup>3</sup>
12" x 24"	30 x 60	2	9mm
18" x 18"	45 x 45	.44	9mm
18" x 36" (rectified)	45 x 90	.22	9.5mm

<sup>1</sup> These values may vary from lot to lot.

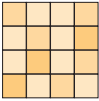
<sup>2</sup> These values are based on actual sizes including the grout joint.

<sup>3</sup> May not apply to textured surfaces or tiles with uneven back patterns.

Trim	Shape	SKU	Nominal Size	Metric (cm)
Bullnose		P43C9	3" x 12"	7.5 x 30
Cove Base		P36C9	6" x 12"	15 x 30
Cove Base Corner		PB3169	1" x 6"	3 x 15

## Color Variations

Color reproductions in this printed piece may vary from actual tile colors. Final selection should be made from actual tile samples.

**V3 = Moderate Variation**  

 While the colors present on a single piece of tile will be indicative of the colors to be expected on the other tiles, the amount of colors on each piece may vary significantly. For example, "that little bit of color" on one piece of tile may be the primary color on the next piece.



**floridatile**