

NY2LA HDP

High Definition Porcelain

COLOR BODY PORCELAIN FLOOR & WALL TILE

PROTECTION THAT LIVES ON
MICROBAN



floridatile

NY2LA^{HDP}

High Definition Porcelain®

Formats Available: 3.75x12, 12x24, 24x24, 21.5x29.5 (waterjet-cut), M122, & M12POLY (waterjet-cut)

No two cities are more symbolic of the modern metropolis than New York and Los Angeles. Inspired by these epicenters of contemporary design and popular culture, NY2LA^{HDP} targets the modern aesthetic. Compelling characteristics of cement and plaster fuse into a porcelain representation of urban sophistication. Graphics were created by hand, starting from recycled pavers and then precisely layering raw elements, sanding, tinting and repeating. The graceful movement of color and subtle texture create a look that is both industrial and urbane.

Color body field tile is available in multiple rectified formats – 3.75x12, 12x24, 24x24 and a waterjet cut polygon shape that measures 21.5x29.5. Each NY2LA^{HDP} format boasts of gorgeous shade variations in each of the six color choices: Malibu White, Brentwood Beige, Riverside Steel, Tribeca Taupe,

Gramercy Gray, and Chelsea Black. Completing the line are bullnose and 36 piece mosaics in each color, and two waterjet cut polygon mosaics that come featured in a warm or cool mix.

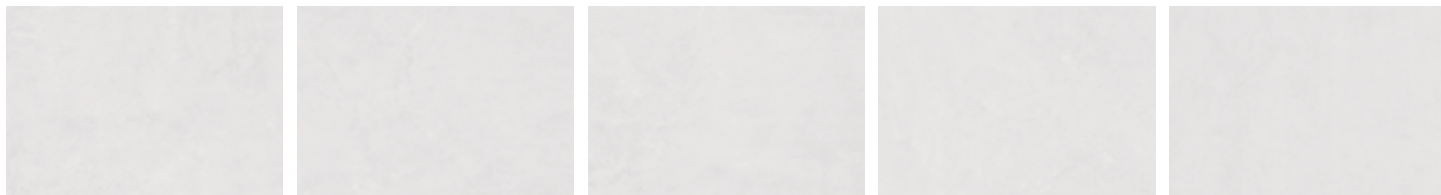
Manufactured using proprietary HDP—High Definition Porcelain® printing technology, NY2LA^{HDP} is appropriate for all applications in both residential and commercial settings. It is entirely made in the USA in our Green Squared® certified Advanced Manufacturing Center in Lawrenceburg, KY, of 40% pre-consumer recycled content. It meets the DCOF AcuTest® requirements to be installed in wet areas and is GREENGUARD® and Porcelain Tile certified. Incorporated into the tile surface is Microban® antimicrobial technology that works continuously to inhibit bacteria growth, improve visible cleanliness, and reduce odors.

shown on front & below: **NY210 24x24** Malibu White, **NY260 24x24** Gramercy Gray, **NY210 21.5x29.5** Malibu White, **NY260 21.5x29.5** Gramercy Gray, **NY230 21.5x29.5** Riverside Steel & **NY210 3.75x12** Malibu White

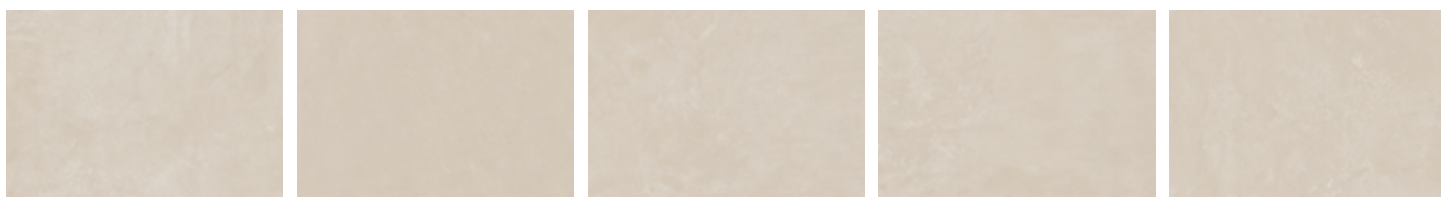


COLOR VARIATION

NY210 MALIBU WHITE



NY220 BRENTWOOD BEIGE



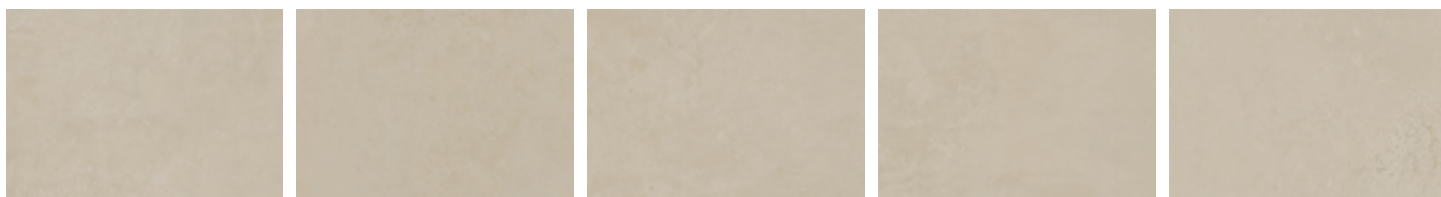
NY230 RIVERSIDE STEEL



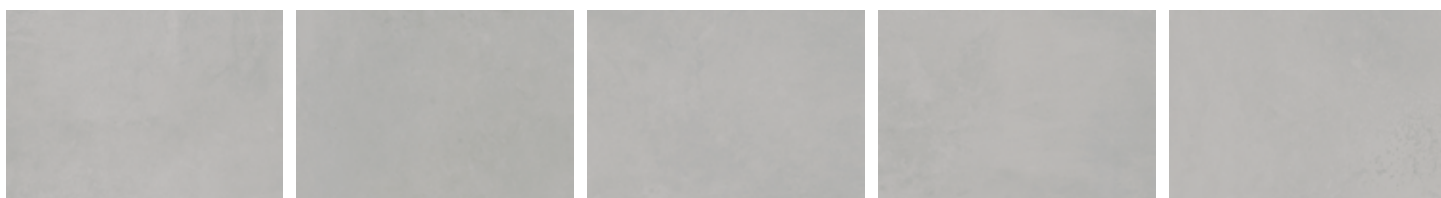
NY240 CHELSEA BLACK



NY250 TRIBECA TAUPE



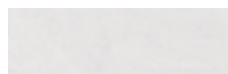
NY260 GRAMERCY GRAY



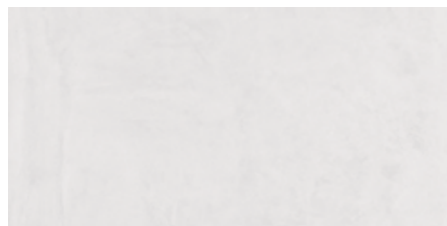
MALIBU WHITE



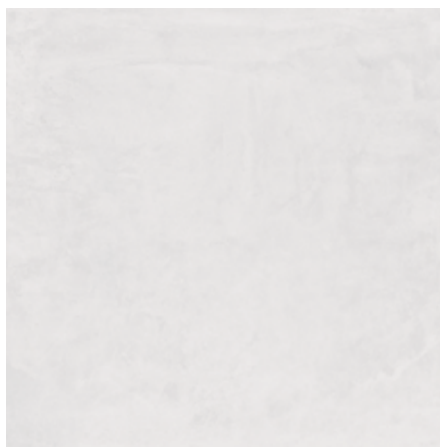
shown: **NY210 24x24** Malibu White



NY210 3.75x12
Malibu White



NY210 12x24
Malibu White



NY210 24x24
Malibu White



NY210 21.5x29.5
Malibu White (waterjet cut)



NY210/M122
Malibu White 36pc Mosaic



NY275/M12POLY
Warm Mix Polygon Mosaic (waterjet cut)
(Malibu White, Brentwood Beige & Tribeca Taupe)



NY220 3.75x12
Brentwood Beige



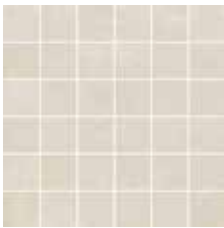
NY220 12x24
Brentwood Beige



NY220 24x24
Brentwood Beige



NY220 21.5x29.5
Brentwood Beige (waterjet cut)



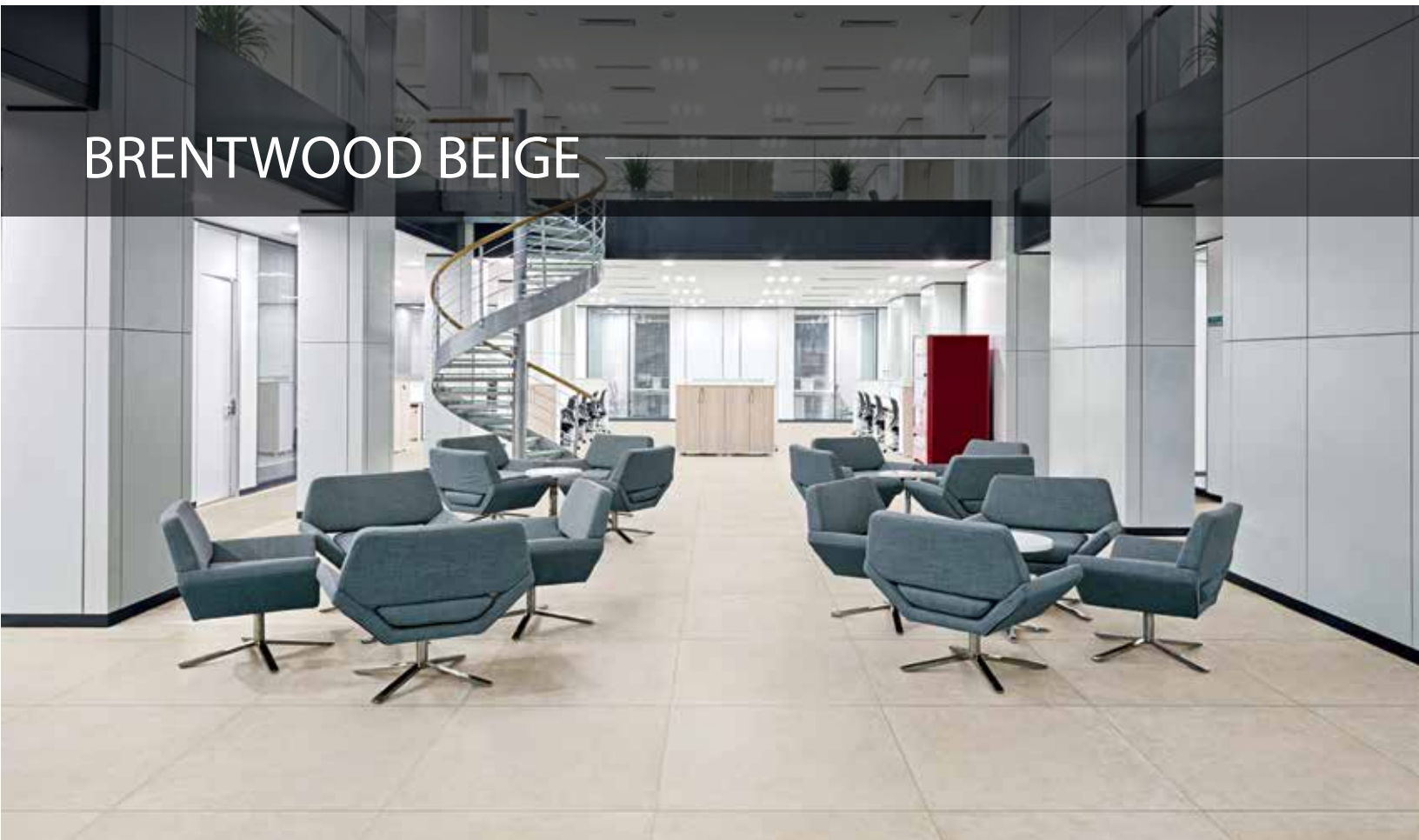
NY220/M122
Brentwood Beige 36pc Mosaic



NY275/M12POLY
Warm Mix Polygon Mosaic (waterjet cut)
(Malibu White, Brentwood Beige & Tribeca Taupe)

shown: NY220 24x24 Brentwood Beige

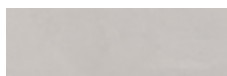
BRENTWOOD BEIGE



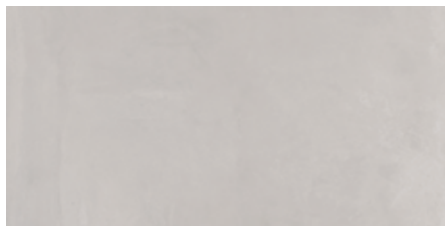
RIVERSIDE STEEL



shown: NY230 12x24 Riverside Steel



NY230 3.75x12
Riverside Steel



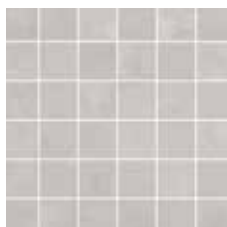
NY230 12x24
Riverside Steel



NY230 24x24
Riverside Steel



NY230 21.5x29.5
Riverside Steel (waterjet cut)



NY230/M122
Riverside Steel 36pc Mosaic



NY285/M12POLY
Cool Mix Polygon Mosaic (waterjet cut)
(Riverside Steel, Gramercy Gray & Chelsea Black)



NY240 3.75x12
Chelsea Black



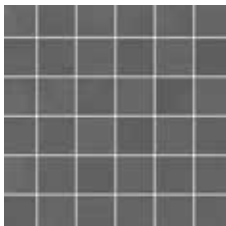
NY240 12x24
Chelsea Black



NY240 24x24
Chelsea Black



NY240 21.5x29.5
Chelsea Black (waterjet cut)



NY240/M122
Chelsea Black 36pc Mosaic



NY285/M12POLY
Cool Mix Polygon Mosaic (waterjet cut)
(Riverside Steel, Gramercy Gray & Chelsea Black)

shown: NY240 21.5x29.5 Chelsea Black

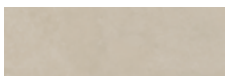
CHELSEA BLACK



TRIBECA TAUPE



shown: NY250 24x24 Tribeca Taupe



NY250 3.75x12
Tribeca Taupe



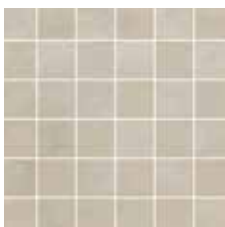
NY250 12x24
Tribeca Taupe



NY250 24x24
Tribeca Taupe



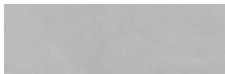
NY250 21.5x29.5
Tribeca Taupe (waterjet cut)



NY250/M122
Tribeca Taupe 36pc Mosaic



NY275/M12POLY
Warm Mix Polygon Mosaic (waterjet cut)
(Malibu White, Brentwood Beige & Tribeca Taupe)



NY260 3.75x12
Gramercy Gray



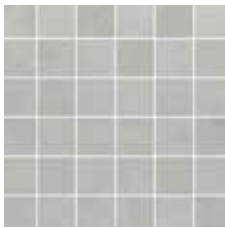
NY260 12x24
Gramercy Gray



NY260 24x24
Gramercy Gray



NY260 21.5x29.5
Gramercy Gray (waterjet cut)



NY260/M122
Gramercy Gray 36pc Mosaic



NY285/M12POLY
Cool Mix Polygon Mosaic (waterjet cut)
(Riverside Steel, Gramercy Gray & Chelsea Black)

shown: **NY260 24x24** Gramercy Gray, **B669.0047.008 12x24** Amplify Deep Blue (matte) & **B669.0044.095 12x24** Amplify Branco Brilho (glossy)

GRAMERCY GRAY





shown: NY230 12x24 Gramercy Gray & NY285/M12POLY Cool Mix Polygon Mosaic (waterjet cut) (Riverside Steel, Gramercy Gray & Chelsea Black)

INSTALLATION

Florida Tile Corporate Headquarters (top): **NY260 24x24** Gramercy Gray & Cotto d'Este Wonderwall **Ritmi 118x39**
(bottom): **NY260 24x24** Gramercy Gray, **NY210 21.5x29.5** Malibu White, **NY230 21.5x29.5** Riverside Steel, **NY250 21.5x29.5** Chelsea Black,
& **NY260 21.5x29.5** Gramercy Gray



NY2LA^{HDP}

High Definition Porcelain™

COLOR BODY PORCELAIN FLOOR & WALL TILE



shown: NY230 12x24 & 24x24 Riverside Steel

Porcelain Technical Data Properties (Floor)	ASTM®	ANSI®	Results ¹
DCOF AcuTest®²	A137.1	≥ 0.42	Pass
Surface Hardness	Mohs Scale	N/A	7 Mohs
Break Strength	C-648	≥ 250 lbf.	≥ 500 lbf. avg.
Water Absorption	C-373	≤ 0.5%	≤ 0.5% ³
Intended Use⁴	N/A	N/A	Residential Light Commercial Heavy Commercial

¹ Values are offered in good faith as being accurate and typical of normal production. Due to the natural variation of raw materials and manufacturing processes, the values of the purchased product for any particular installation may vary.

² ANSI® A137.1 standard, ceramic tiles selected for level interior spaces expected to be walked upon when wet must have a minimum wet DCOF AcuTest® value of 0.42.

³ Average production value.

⁴ Please visit www.floridatile.com/intended-use for further details.

Typical Uses

NY2LA^{HDP} color body porcelain floor and wall tile is appropriate for residential and commercial wall, countertop, backsplash, and most floor applications.

Notice: Not all flooring products are suitable for wet areas, specialized applications, or commercial use. Please refer to the American National Standard Specifications for Ceramic Tile (ANSI® A137.1) for ceramic, stone, and glass installation for specific usage and installation information.

This Florida Tile product will contribute to USGBC LEED® points and the ANSI® approved NAHB® Green Building Points.

Field Tile Nominal Size (in) ¹	Metric (cm)	Pcs./Sq Ft ²	Thickness ³	Edge
3.75x12	9.5x30	3.26	10mm	Rectified
12x24	30x60	.5	10mm	Rectified
24x24	60x60	.25	10mm	Rectified
21.5x29.5POLY	54.5x75	.389	10mm	Waterjet-Cut

¹ These values may vary from lot to lot.

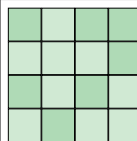
² These values are based on actual sizes including the grout joint.

³ May not apply to textured surfaces or tiles with uneven back patterns such as mesh mounted mosaics.

Trim	Shape	SKU	Nominal Size (in) ¹	Metric (cm)
Bullnose		P43N9	3x24	7.5x60

¹ These values may vary from lot to lot.

Color Variation



V2 Slight Variation

Clearly distinguishable differences in texture and/or pattern with similar colors.

Color, texture, and finish variations may occur due to the nature of the product.

Color reproductions in this printed piece may vary from actual tile colors. Final selection should be made from actual tile samples.

