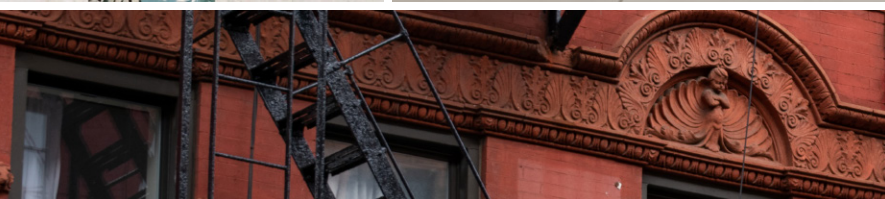
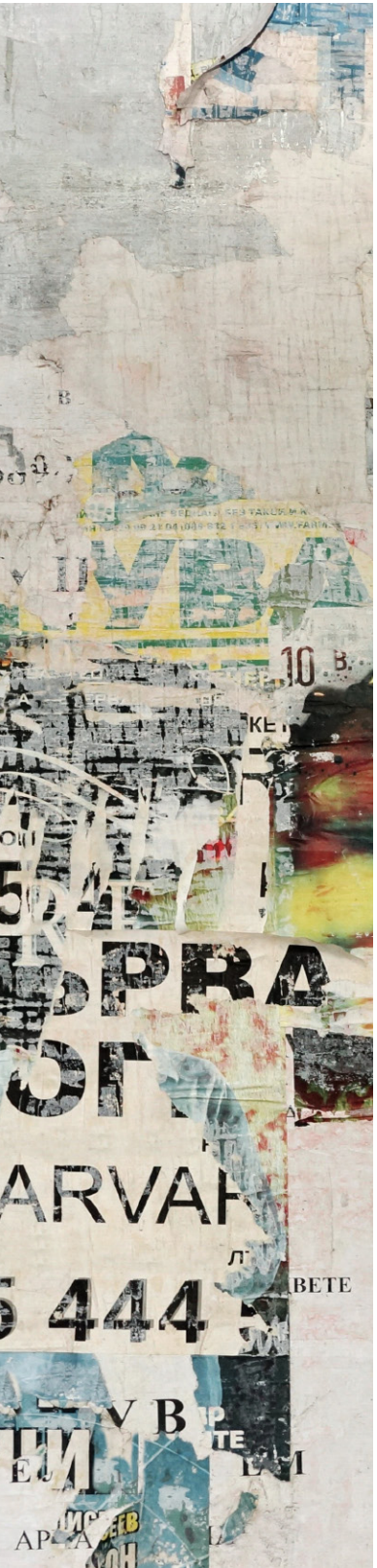


# EAST VILLAGE HDP

High Definition Porcelain

COLOR BODY PORCELAIN FLOOR & WALL TILE



floridatile



# EAST VILLAGE HDP

Florida Tile's East Village<sup>HDP</sup> collection is true to its namesake NYC neighborhood. The creative hotbed of lower Manhattan is beloved for its patented grit and spirited grandeur. A melting pot of artists, actors, musicians, and more, it embodies a rich coming together of social, cultural, and architectural histories that ardently resist the norm. Synonymous with its iconic boutiques, lounges, bookstores, and cafes, East Village<sup>HDP</sup> celebrates a freethinking aesthetic that pushes boundaries and never ceases to deliver authentic, head-turning style.

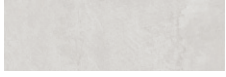
This color body porcelain field tile boasts a wide range of rectified formats – 3.75x12, 12x24, 24x24, 24x48 – complemented by a dramatic, oversized waterjet-cut hexagon measuring 22.5x22.5. Transient variations of tone in an artful, washed concrete look are found in each of the five colors: Avenue A Gray, E. Houston Warm Gray, Potter's Red Clay, Stuyvesant Charcoal, and Tompkins Blue/Black. Completing this inspired collection are a bullnose and 36-piece mosaic in each color and two unique, waterjet-cut, tri-colored, pieced hexagon mosaics in both a warm and cool mix.

Manufactured using proprietary HDP—High Definition Porcelain® printing technology, East Village<sup>HDP</sup> is appropriate for all applications in both residential and commercial settings. It is entirely made in the USA in our Green Squared® certified Advanced Manufacturing Center in Lawrenceburg, KY, of 40% pre-consumer recycled content. It meets the DCOF AcuTest® requirements to be installed in wet areas and is GREENGUARD® and Porcelain Tile certified. Incorporated into the tile surface is Microban® antimicrobial technology that works continuously to inhibit bacteria growth, improve visible cleanliness, and reduce odors.



shown on front: **EVG20 3.75x12 & 24x24** E. Houston Warm Gray  
above: **EVG10 24x28** Avenue A Gray, **EVG30 12x24** Potter's Red Clay & **EVG123/M7x7HEX** Warm Mix Hexagon Mosaic

# AVENUE A GRAY



**EVG10 3.75x12**  
Avenue A Gray



**EVG10 12x24**  
Avenue A Gray



**EVG10 24x24**  
Avenue A Gray



**EVG10 24x48**  
Avenue A Gray



**EVG10 22.5x22.5HEX**  
Avenue A Gray (waterjet-cut)



**EVG10/M122**  
Avenue A Gray 36pc Mosaic



**EVG145/M7x7HEX**  
Cool Mix Hexagon Mosaic (waterjet-cut)  
(Avenue A Gray, Stuyvesant Charcoal  
& Tompkins Blue/Black)

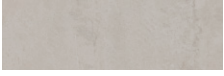


**EVG123/M7x7HEX**  
Warm Mix Hexagon Mosaic (waterjet-cut)  
(Avenue A Gray, E. Houston Warm Gray  
& Potter's Red Clay)





# E. HOUSTON WARM GRAY



**EVG20 3.75x12**  
E. Houston Warm Gray



**EVG20 12x24**  
E. Houston Warm Gray



**EVG20 24x24**  
E. Houston Warm Gray



**EVG20 24x48**  
E. Houston Warm Gray



**EVG20 22.5x22.5HEX**  
E. Houston Warm Gray (waterjet-cut)



**EVG20/M122**  
E. Houston Warm Gray 36pc Mosaic



**EVG123/M7x7HEX**  
Warm Mix Hexagon Mosaic (waterjet-cut)  
(Avenue A Gray, E. Houston Warm Gray & Potter's Red Clay)







left: **EVG20 3.75x12 & 24x24** E. Houston Warm Gray  
right: **EVG10 22.5x22.5HEX** Avenue A Gray, **EVG20 22.5x22.5HEX** E. Houston Warm Gray, **EVG30 22.5x22.5HEX** Potter's Red Clay & **EVG30 24x48** Potter's Red Clay



# POTTER'S RED CLAY



**EVG30 3.75x12**  
Potter's Red Clay



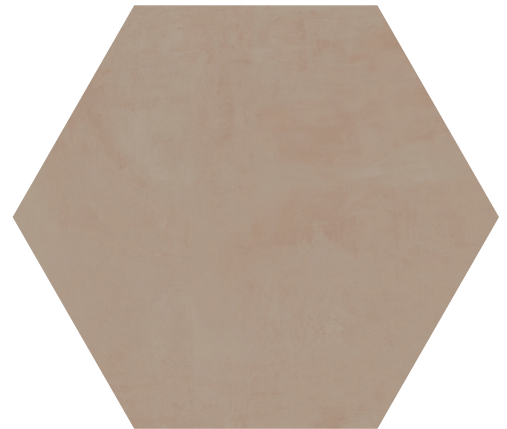
**EVG30 12x24**  
Potter's Red Clay



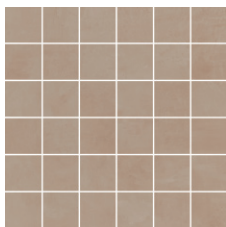
**EVG30 24x24**  
Potter's Red Clay



**EVG30 24x48**  
Potter's Red Clay



**EVG30 22.5x22.5HEX**  
Potter's Red Clay (waterjet-cut)



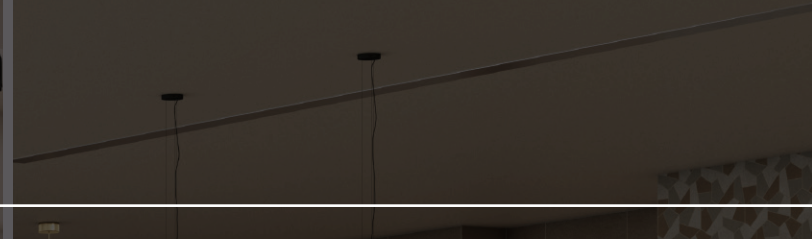
**EVG30/M122**  
Potter's Red Clay 36pc Mosaic



**EVG123/M7x7HEX**  
Warm Mix Hexagon Mosaic (waterjet-cut)  
(Avenue A Gray, E. Houston Warm Gray & Potter's Red Clay)





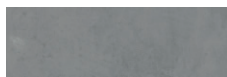


left: **EVG10 22.5x22.5HEX** Avenue A Gray, **EVG20 22.5x22.5HEX** E. Houston Warm Gray, **EVG30 22.5x22.5HEX** Potter's Red Clay & **EVG30 24x48** Potter's Red Clay  
right: **EVG10 24x28** Avenue A Gray, **EVG30 12x24** Potter's Red Clay & **EVG123/M7x7HEX** Warm Mix Hexagon Mosaic

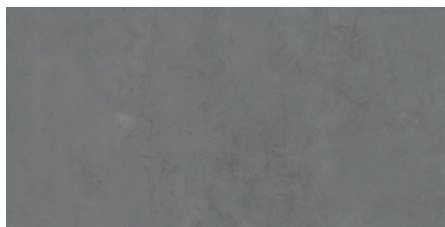


# STUYVESANT CHARCOAL

---



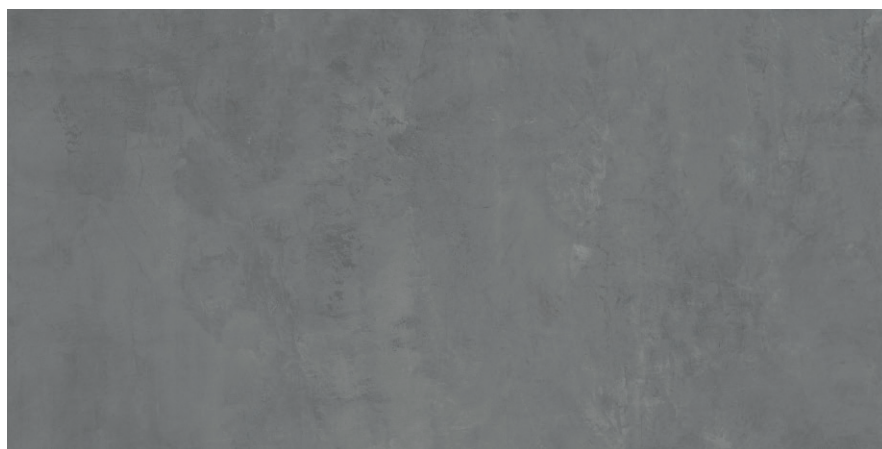
**EVG40 3.75x12**  
Stuyvesant Charcoal



**EVG40 12x24**  
Stuyvesant Charcoal



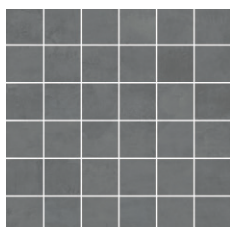
**EVG40 24x24**  
Stuyvesant Charcoal



**EVG40 24x48**  
Stuyvesant Charcoal



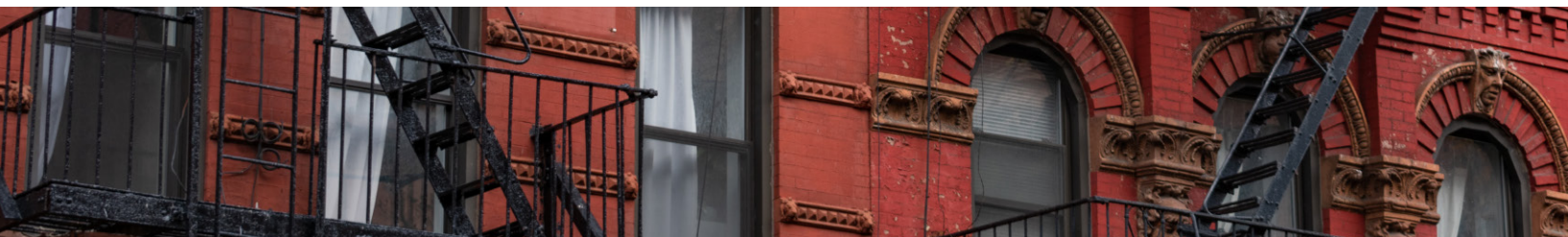
**EVG40 22.5x22.5HEX**  
Stuyvesant Charcoal (waterjet-cut)



**EVG40/M122**  
Stuyvesant Charcoal 36pc Mosaic



**EVG145/M7x7HEX**  
Cool Mix Hexagon Mosaic (waterjet-cut)  
(Avenue A Gray, Stuyvesant Charcoal & Tompkins Blue/Black)







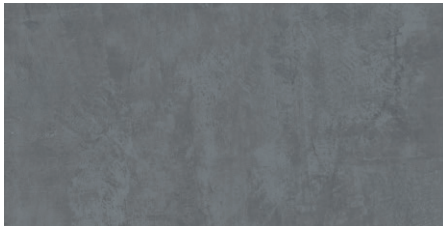
left: **EVG10 22.5x22.5HEX** Avenue A Gray, **EVG40 22.5x22.5HEX** Stuyvesant Charcoal, **EVG50 22.5x22.5HEX** Tompkins Blue/Black, **EVG40 24x24** Stuyvesant Charcoal & **EVG50 12x24** Tompkins Blue/Black  
right: **EVG10 12x24** Avenue A Gray, **EVG40 3.75x12** Stuyvesant Charcoal & **EVG145/M7x7HEX** Cool Mix Hexagon Mosaic



# TOMPKINS BLUE/BLACK



**EVG50 3.75x12**  
Tompkins Blue/Black



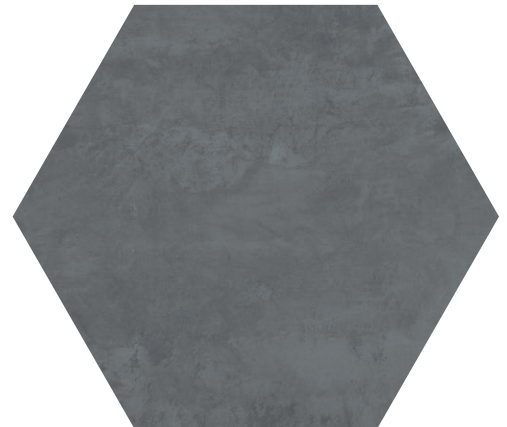
**EVG50 12x24**  
Tompkins Blue/Black



**EVG50 24x24**  
Tompkins Blue/Black



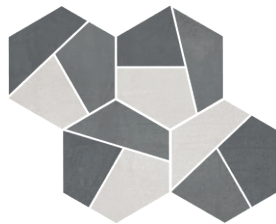
**EVG50 24x48**  
Tompkins Blue/Black



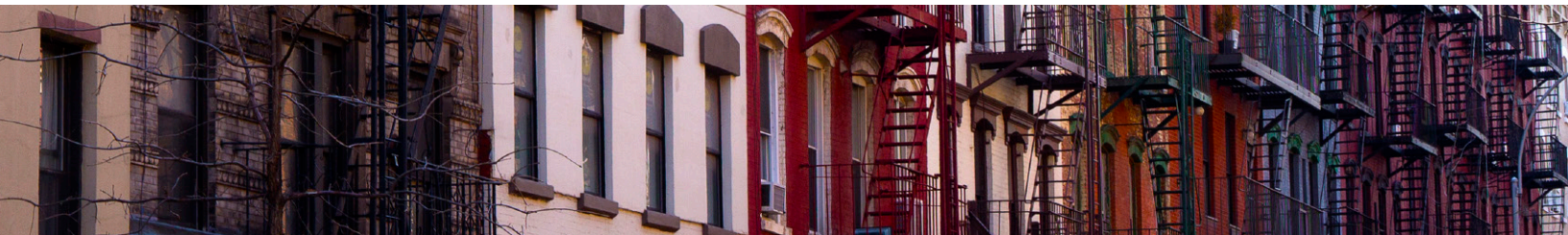
**EVG50 22.5x22.5HEX**  
Tompkins Blue/Black (waterjet-cut)



**EVG50/M122**  
Tompkins Blue/Black 36pc Mosaic



**EVG145/M7x7HEX**  
Cool Mix Hexagon Mosaic (waterjet-cut)  
(Avenue A Gray, Stuyvesant Charcoal & Tompkins Blue/Black)







left: **EVG10 22.5x22.5HEX** Avenue A Gray, **EVG40 22.5x22.5HEX** Stuyvesant Charcoal, **EVG50 22.5x22.5HEX** Tompkins Blue/Black, **EVG40 24x24** Stuyvesant Charcoal & **EVG50 12x24** Tompkins Blue/Black  
right: **EVG10 12x24** Avenue A Gray & **EVG145/M7x7HEX** Cool Mix Hexagon Mosaic



# EAST VILLAGE HDP

High Definition Porcelain™

PROTECTION THAT LIVES ON  
**MICROBAN**



above: **EVG10 22.5x22.5HEX** Avenue A Gray, **EVG20 22.5x22.5HEX** E. Houston Warm Gray, **EVG30 22.5x22.5HEX** Potter's Red Clay, **EVG30 24x48** Potter's Red Clay & **EVG10 12x24** Avenue A Gray

Porcelain Technical Data Properties (Floor)	ASTM®	ANSI®	Results <sup>1</sup>
<b>DCOF AcuTest®<sup>2</sup></b>	A137.1	≥ 0.42	Pass
<b>Surface Hardness</b>	Mohs Scale	N/A	7 Mohs
<b>Break Strength</b>	C-648	≥ 250 lbf.	≥ 410 lbf. avg.
<b>Water Absorption</b>	C-373	≤ 0.5%	≤ 0.5% <sup>3</sup>
<b>Intended Use<sup>4</sup></b>	N/A	N/A	Residential Light Commercial Heavy Commercial

<sup>1</sup> Values are offered in good faith as being accurate and typical of normal production. Due to the natural variation of raw materials and manufacturing processes, the values of the purchased product for any particular installation may vary.

<sup>2</sup> ANSI® A137.1 standard, ceramic tiles selected for level interior spaces expected to be walked upon when wet must have a minimum wet DCOF AcuTest® value of 0.42.

<sup>3</sup> Average production value.

<sup>4</sup> Please visit [www.floridatile.com/intended-use](http://www.floridatile.com/intended-use) for further details.

### Typical Uses

East Village<sup>HDP</sup> color body porcelain floor and wall tile is appropriate for all standard, residential and commercial wall, countertop, backsplash, and floor applications.

Notice: Not all flooring products are suitable for wet areas, specialized applications, or commercial use. Please refer to the American National Standard Specifications for Ceramic Tile (ANSI® A137.1) for ceramic, stone, and glass installation for specific usage and installation information.

This Florida Tile product will contribute to USGBC LEED® points and the ANSI® approved NAHB® Green Building Points.

Color, texture, and finish variations may occur due to the nature of the product.

Color reproductions in this printed piece may vary from actual tile colors. Final selection should be made from actual tile samples.

Field Tile Nominal Size (in) <sup>1</sup>	Metric (cm)	Pcs./Sq Ft <sup>2</sup>	Thickness <sup>3</sup>	Edge
<b>3.75x12</b>	9.5x30	3.26	10mm	Rectified
<b>12x24</b>	30x60	.5	10mm	Rectified
<b>24x24</b>	60x60	.25	10mm	Rectified
<b>24x48</b>	60x122	.129	10mm	Rectified
<b>22.5x22.5HEX*</b>	58x58	.38	10mm	Waterjet-Cut

<sup>1</sup> These values may vary from lot to lot.

<sup>2</sup> These values are based on actual sizes including the grout joint.

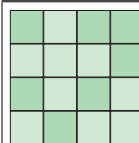
<sup>3</sup> May not apply to textured surfaces or tiles with uneven back patterns such as mesh mounted mosaics.

\* For specific sizes, please refer to the Technical Data Sheet by visiting [www.floridatile.com](http://www.floridatile.com).

Trim	Shape	SKU	Nominal Size (in) <sup>1</sup>	Metric (cm)
<b>Bullnose</b>		P43N9	3x24	7.5x60

<sup>1</sup> These values may vary from lot to lot.

### Color Variation



#### V2 Slight Variation

Clearly distinguishable differences in texture and/or pattern with similar colors.

### Hexagon Mosaic Notice

Each M7x7Hex mosaic (waterjet-cut) is sold (6) pieces to a carton in a mixed assortment of A, B, and C layouts. Total coverage per carton is 5.12 SQFT.

